



OPEN ACCESS

# Is e-cigarette use in non-smoking young adults associated with later smoking? A systematic review and meta-analysis

Jasmine N Khouja ,<sup>1,2,3</sup> Steph F Suddell,<sup>1,3,4</sup> Sarah E Peters,<sup>5</sup> Amy E Taylor,<sup>2,4</sup> Marcus R Munafò<sup>1,3</sup>

► Additional material is published online only. To view please visit the journal online (<http://dx.doi.org/10.1136/tobaccocontrol-2019-055433>).

<sup>1</sup>MRC Integrative Epidemiology Unit, University of Bristol, Bristol, UK

<sup>2</sup>Department of Population Health Sciences, Bristol Medical School, University of Bristol, Bristol, UK

<sup>3</sup>UK Centre for Tobacco and Alcohol Studies, School of Psychological Science, University of Bristol, Bristol, UK

<sup>4</sup>NHRI Biomedical Research Centre, University Hospitals Bristol NHS Foundation Trust, Bristol, UK

<sup>5</sup>Adapt (Study Rocket Ltd), London, UK

## Correspondence to

Dr Jasmine N Khouja, MRC Integrative Epidemiology Unit, University of Bristol, Bristol BS8 1TU, UK; [jasmine.khouja@bristol.ac.uk](mailto:jasmine.khouja@bristol.ac.uk)

Received 4 October 2019

Revised 11 December 2019

Accepted 31 December 2019

## ABSTRACT

**Objective** The aim of this review was to investigate whether e-cigarette use compared with non-use in young non-smokers is associated with subsequent cigarette smoking.

**Data sources** PubMed, Embase, Web of Science, Wiley Cochrane Library databases, and the 2018 Society for Research on Nicotine and Tobacco and Society for Behavioural Medicine conference abstracts.

**Study selection** All studies of young people (up to age 30 years) with a measure of e-cigarette use prior to smoking and an outcome measure of smoking where an OR could be calculated were included (excluding reviews and animal studies).

**Data extraction** Independent extraction was completed by multiple authors using a preprepared extraction form.

**Data synthesis** Of 9199 results, 17 studies were included in the meta-analysis. There was strong evidence for an association between e-cigarette use among non-smokers and later smoking (OR: 4.59, 95% CI: 3.60 to 5.85) when the results were meta-analysed in a random-effects model. However, there was high heterogeneity ( $I^2=88\%$ ).

**Conclusions** Although the association between e-cigarette use among non-smokers and subsequent smoking appears strong, the available evidence is limited by the reliance on self-report measures of smoking history without biochemical verification. None of the studies included negative controls which would provide stronger evidence for whether the association may be causal. Much of the evidence also failed to consider the nicotine content of e-liquids used by non-smokers meaning it is difficult to make conclusions about whether nicotine is the mechanism driving this association.

## INTRODUCTION

Existing evidence suggests that electronic cigarette (e-cigarette) use is less harmful than smoking<sup>1</sup> and is an effective smoking cessation aid<sup>2</sup>; however, there are concerns that e-cigarettes may act as a gateway to smoking cigarettes among young people. If this is correct, rather than seeing a decline in smoking rates we may see smoking rates remaining stable or increasing due to a new generation of smokers for whom e-cigarettes have acted as a route into smoking. This hypothesis (sometimes referred to as the ‘gateway hypothesis’ or ‘catalyst model’) has been widely debated among researchers and public health officials. Some argue that a common liability better explains the association between vaping and

later smoking, whereby the same genetic or environmental factors that increase the likelihood of someone vaping also increase the likelihood of someone smoking.<sup>3</sup> As many people use e-cigarettes to help them stop smoking, it would also be logical to assume the opposite direction of causality with smoking causing people to vape.<sup>4</sup> The lack of consensus on the issue demonstrates the need for the current evidence to be synthesised.

One systematic review and meta-analysis of the association between baseline e-cigarette use and later smoking concluded that e-cigarette use was associated with an increased likelihood of smoking at the follow-up.<sup>5</sup> Although this meta-analysis is relatively recent, this is a fast-moving field with a substantial number of relevant studies having been published since 2017. Given the topic is of great interest to researchers and policy-makers, an updated meta-analysis is necessary. Moreover, in the previous meta-analysis,<sup>5</sup> moderate heterogeneity was observed between the study results. Some potential sources of heterogeneity could include the age range of the participants in the studies and the risk of bias among the studies. Soneji and colleagues<sup>5</sup> addressed this by stratifying by average age, finding that there was greater heterogeneity between studies of adolescents (under the age of 18 years) compared with studies of young adults. However, they did not stratify by the risk of bias. This is important because the preconceptions of study authors may also influence how studies are designed and conducted, and this may be reflected in a study’s conclusions. For example, two studies in the Soneji and colleagues<sup>5</sup> meta-analysis drew diverging conclusions, despite the pooled ORs not differing substantially from each other. Leventhal and colleagues<sup>6</sup> concluded that there was insufficient evidence to support the gateway hypothesis, whereas Miech and colleagues<sup>7</sup> concluded that there was a one-way bridge from e-cigarette use to smoking, despite both studies having similar results.

In this systematic review and meta-analysis, we updated and extended previous reviews in which e-cigarette use and later smoking have been explored while looking at a broad range of evidence. Our aim was to investigate whether e-cigarette use, compared with non-use, in young non-smokers is associated with subsequent cigarette use by combining evidence from studies investigating e-cigarette use and subsequent smoking where an OR could be calculated. Additionally, we aimed to use stratification to explore sources of heterogeneity



© Author(s) (or their employer(s)) 2020. Re-use permitted under CC BY. Published by BMJ.

**To cite:** Khouja JN, Suddell SF, Peters SE, *et al.* *Tob Control* Epub ahead of print: [please include Day Month Year]. doi:10.1136/tobaccocontrol-2019-055433

and biases in conclusions regarding the gateway hypothesis. From our knowledge of the evidence base and considering this is a fast-moving area of research, we expected to identify a substantial number of studies that have been published since the review by Soneji and colleagues.<sup>5</sup>

## METHODS

The protocol for this systematic review and meta-analysis was published online prior to initiating the search and can be found on the Open Science Framework (<https://osf.io/3gc2y/>). Preferred Reporting Items for Systematic review and Meta-Analysis (PRISMA) and MOOSE guidelines were followed (where applicable).

### Eligibility criteria

We included randomised controlled trials, longitudinal studies, cross-sectional studies and case-control studies. Only studies investigating young people aged up to the age of 30 years old (inclusive) were included. Studies had to have a baseline or retrospective measure of e-cigarette use (including but not limited to ever, occasional, heavy, recent, regular or frequent use) prior to initiating smoking and a measure of cigarette smoking (including but not limited to ever, occasional, heavy, recent, regular, frequent or escalated smoking) as an outcome. Studies had to include a comparison group (ie, group which the exposed group is compared with), which could include young people who were never, trial or not recent e-cigarette users or smokers, dependent on the study. Review articles and animal studies were excluded.

### Information sources

Our search strategy was a replication and extension of a strategy used in a similar review.<sup>5</sup> We conducted an electronic search of the databases PubMed, Embase, Web of Science, Wiley Cochrane Library, Society for Research on Nicotine and Tobacco, and the Society for Behavioural Medicine. Due to member-restricted access, we were unable to search the National Institutes of Health (NIH) Tobacco Regulatory Science Conference abstracts as stated in our preregistered protocol. We compared the list of studies to be included with those included in previous similar reviews to ensure the search strategy had not omitted any relevant studies. Studies written in languages other than English were translated by colleagues and using Google translate where translations were not already available. The search strategy was conducted up to 24 November 2018. E-cigarettes are a relatively new product on the consumer market; therefore, no date restrictions were placed on the search strategy.

### Search strategy

Studies were initially selected for screening using the following search terms within the titles, abstracts or keywords: Cigar\* OR Tobacco OR Smok\* AND Electronic Cigarette\* OR E-Cig\* OR Electronic Nicotine Delivery System\* OR Vape OR Vaping OR Alternative Nicotine Delivery System\*. Boolean operators and truncations differed depending on the database. Relevant MeSH terms were included when searching the PubMed database. An example search can be found in the online supplementary material.

### Study selection and data collection process

Study selection and data extraction took place over three stages. Stage 1 consisted of title and abstract screening; stage 2 consisted of a full-text screening; stage 3 consisted of data extraction from selected studies. A full list of extracted data is included in the

online supplementary material. Titles, abstracts and full-text articles were double screened and then double extracted by three reviewers (JK, [100%], SS [50%] and SP [50%]). Discrepancies were resolved by a third reviewer where necessary. Covidence ([www.covidence.org](http://www.covidence.org)), an online systematic review tool that is in partnership with Cochrane, was used to streamline and document this process.

When insufficient information was available to determine eligibility, we contacted study authors. Where insufficient information was provided or obtained, the text was excluded from the review.

### Risk of bias assessment

The risk of bias was assessed using the Newcastle-Ottawa Scale (NOS). The selection, comparability and outcome domains of the tool were used to assess the risk of bias in all full texts included in the review. The studies were rated as good, fair or poor quality based on the star system of the tool (maximum of 9 stars, see online supplementary material for more information). Quality/risk was double assessed by the review team. Studies were not excluded based on the risk of bias.

Risk of bias across studies was assessed using the symmetry and 95% confidence region of a funnel plot.<sup>8</sup> Asymmetry and >5% of points lying above the 95% confidence region may indicate some bias across studies.

### Causality assessment

Using Bradford-Hill criteria, we selected four criteria that were relevant to the studies of interest to indicate the strength of evidence of a possible causal relationship between our exposure and outcome (see the online supplementary material for more details). These were: strength of association, specificity, temporality and dose responsiveness. These criteria are particularly relevant to studies assessing whether e-cigarettes may act as a gateway to smoking.<sup>5</sup>

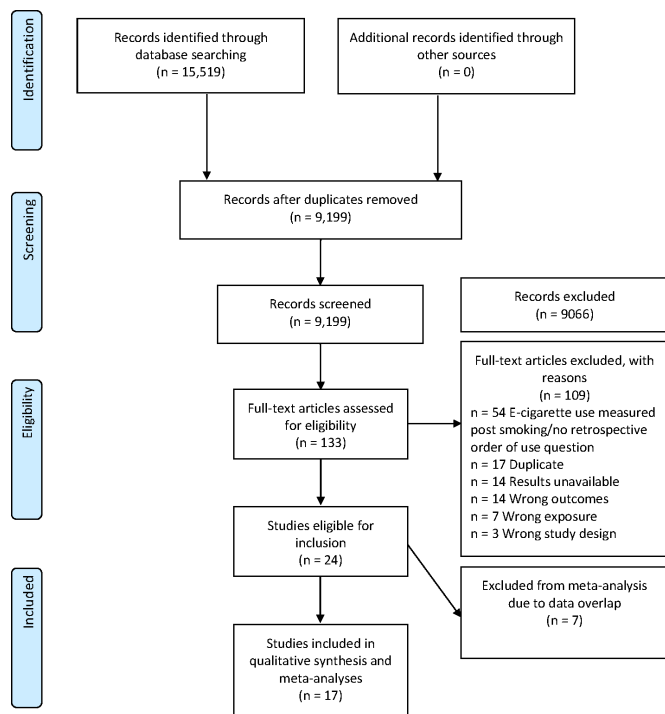
### Summary measures

Effect estimates were reported as ORs (and converted where necessary). ORs of the association between e-cigarette use and later cigarette use were combined using a random-effects model. All unadjusted ORs were calculated using observed data points that were obtained from the original study or directly from the author if insufficient information was provided in the original study. Calculated effect sizes were double checked by the review team.

Adjusted ORs were reported as they were in the original study and adjusted risk ratios were converted to ORs using a modified version of a formula published in the Cochrane Handbook (Section 12.5.4.4)<sup>8</sup>:  $OR = (-RR + RR \times ACR) / (RR \times ACR - 1)$ , where OR=odds ratio; RR=risk ratio; ACR=assumed control risk (calculated on a per study basis as the risk of later smoking among controls).

### Synthesis and results

In a random-effects model, we calculated the pooled ORs from unadjusted and adjusted ORs for ever cigarette use at follow-up among never smokers at baseline, in ever compared with never e-cigarette users at baseline. Where multiple exposure or outcome measures were included in the original study, this estimate was used in the main analysis. If ever use of e-cigarettes was not reported, then the main effect reported in the study was included in our main analyses.



**Figure 1** Study selection flow diagram.

Where possible (ie, where more than one study was available), we also analysed the results in a series of subgroups—we pooled odds for: (i) ever versus never e-cigarette use at baseline and ever versus never smoking at follow-up; (ii) ever versus never e-cigarette use at baseline and current (past 30 days) versus non-current use of cigarettes at follow-up, and (iii) current versus non-current e-cigarette use at baseline and ever versus never smoking at follow-up. In retrospective studies, measures of e-cigarette use prior to smoking were treated as baseline and smoking status at the time of the study was treated as the follow-up. We aimed to pool the results of regular (at least monthly for >6 months) cigarette use at follow-up among never smokers at baseline, in regular compared with non-regular e-cigarette users at baseline; however, insufficient data were available to do so.

Heterogeneity of study effect estimates can be indicated by an  $I^2$  statistic. Sources of heterogeneity were explored through subgroup analysis. All analyses were conducted using Stata SE V.15.1 and Review Manager V.5.

### Patient and public involvement

This research was done without public involvement. The public was not invited to partake in the conception or design of the study, or the interpretation of the results. The public was not invited to contribute to the writing or editing of this document for readability or accuracy. The results of this meta-analysis will be disseminated to the public as widely as possible.

## RESULTS

### Study selection

Figure 1 shows the PRISMA study selection flowchart. A total of 15 519 studies were selected for title and abstract screening, 9199 remained after exclusion of duplicates. After title and abstract screening, 133 studies were selected for full-text screening. Of these, 24 studies were initially selected for inclusion; however, 7 studies were not included in the meta-analysis because the data overlapped with other included studies. Where

data overlapped, the most relevant study was selected based on aims (ie, studies where the primary aim addressed the question of interest were selected above those which addressed the question in secondary analysis) and sample size (ie, larger sample sizes were included where both studies were relevant). In the meta-analysis, 16 studies were included in the main pooled unadjusted analysis and 17 studies were included in the pooled adjusted analysis. One study was excluded from the unadjusted analysis due to insufficient raw data availability but had adjusted results available.

### Study characteristics

Details of the study characteristics are shown in the online supplementary table S1. The majority of the studies included were longitudinal and one was cross-sectional in which participants were asked questions regarding their product use retrospectively. Total study sizes varied considerably, ranging from 347 to 39 718 and the number of participants included in the final analyses were often substantially smaller. Participants were mostly under the age of 18 years and many of the studies were school-based. Where the number of men and women in the study were reported, around 50% of participants were men in most cases. However, only 33% were men in one study.<sup>9</sup> The majority of the studies (10) were conducted in the USA, 3 studies took place in the UK, 1 was based in Canada, 1 in Mexico, 1 in Germany and 1 in the Netherlands. Follow-up periods ranged from 4 to 24 months.

In terms of observed exposures, most studies explored ever e-cigarette use with never e-cigarette users as a comparator. Two studies looked at current users with not current users as the comparator<sup>7 10</sup> and two looked at both current and ever use.<sup>11 12</sup> Only one study considered the amount of exposure to nicotine,<sup>13</sup> and one study looked at the frequency of e-cigarette use.<sup>14</sup> In one study that took nicotine use into account,<sup>13</sup> two separate analyses were conducted for: (1) ever use of nicotine containing e-cigarettes (OR: 11.90, 95% CI: 3.36 to 42.11); and (2) ever use of non-nicotine containing e-cigarettes (OR: 5.36, 95% CI: 2.73 to 10.52). However, the analysis groups were not mutually exclusive (ie, an individual would have been in both analysis groups if they had tried both nicotine containing and nicotine free e-cigarettes). No analysis was reported using subgroups of exclusive nicotine or nicotine-free use. The one study which addressed the frequency of e-cigarette use<sup>14</sup> found that those who had used e-cigarettes at varying frequencies from one time or two times (OR: 2.88, 95% CI: 1.96 to 4.22) to weekly/daily (OR: 4.09, 95% CI: 2.43 to 6.88) were more likely than those who had not used e-cigarettes to have smoked at least once at follow-up.

Most of the included studies used ever smoking as an outcome. One study explored experimentation with smoking, as well as frequent and infrequent smoking,<sup>15</sup> and three looked at recent/current smoking at follow-up.<sup>6 11 12</sup>

Covariates included in the analyses varied greatly between studies. One study only adjusted for four covariates,<sup>16</sup> whereas another adjusted for over 20 covariates.<sup>17</sup> All studies adjusted for sex and most adjusted for age and race/ethnicity. Other frequently included covariates were peer smoking, sensation seeking (and related factors), and drug and alcohol use. No studies adjusted for nicotine exposure via e-cigarettes (ie, e-liquid content and/or frequency of nicotine exposure).

### Quality/risk of bias within studies and causality

The quality of studies (or inversely, risk of bias) was good in most cases when rated using the NOS (online supplementary

**Table 1** Individual results of studies included in the meta-analysis

Study	Initiated cigarette smoking (n)		Odds of initiating smoking	
	E-cigarette users	Never/not current e-cigarette users	Unadjusted OR (95% CI)	Adjusted OR (95% CI)
Auf <i>et al</i> <sup>19</sup>	*	*	*	3.7 (3.1 to 4.5)
Barrington-Trimis <i>et al</i> <sup>15</sup>	184/857	280/4171	3.80 (3.10 to 4.66)	4.57 (3.56 to 5.87)
Best <i>et al</i> <sup>16</sup>	74/183	249/1942	4.62 (3.34 to 6.38)	2.42 (1.63 to 3.60)
Conner <i>et al</i> <sup>20</sup>	118/343	124/1383	5.32 (3.99 to 7.11)	4.06 (2.94 to 5.60)
East <i>et al</i> <sup>28</sup>	11/21	74/902	12.31 (5.06 to 29.94)	10.57 (3.33 to 33.50)
Hammond <i>et al</i> <sup>10</sup>	136/487	1313/16 831	4.58 (3.73 to 5.63)	2.12 (1.68 to 2.66)
Leventhal <i>et al</i> <sup>6</sup>	19/222	71/2308	2.95 (1.74 to 4.99)	1.75 (1.10 to 2.77)
Loukas <i>et al</i> <sup>9</sup>	114/568	168/1190	2.72 (2.10 to 3.53)	1.36 (1.01 to 1.83)
Lozano <i>et al</i> <sup>18</sup>	86/216	950/4479	2.46 (1.85 to 3.26)	1.60 (1.31 to 1.97)†
Miech <i>et al</i> <sup>7</sup>	4/13	14/213	6.32 (1.73 to 23.10)	6.58 (2.04 to 57.88)†
Morgenstern, <i>et al</i> <sup>17</sup>	93/312	175/1867	4.11 (3.08 to 5.48)	2.50 (1.82 to 3.54)†
Primack <i>et al</i> <sup>21</sup>	6/16	65/678	5.66 (1.99 to 16.07)	8.3 (1.2 to 58.6)
Primack <i>et al</i> <sup>20</sup>	6/16	81/889	6.06 (2.15 to 17.10)	6.82 (1.65 to 28.25)
Spindle <i>et al</i> <sup>11</sup>	45/153	230/2163	3.50 (2.41 to 5.09)	3.37 (1.91 to 5.94)
Treur <i>et al</i> <sup>13</sup>	432/740	235/2049	10.83 (8.87 to 13.22)	11.9 (3.36 to 42.11)
Watkins <i>et al</i> <sup>12</sup>	81/425	387/9923	5.80 (4.46 to 7.54)	2.53 (1.80 to 3.56)
Wills <i>et al</i> <sup>14</sup>	42/215	50/926	4.25 (2.74 to 6.61)	2.87 (2.03 to 4.05)
Overall	1,451/4787	4340/52 727	4.59 (3.60 to 5.85)	2.92 (2.30 to 3.71)

\*Raw data were not available or insufficient information was provided to calculate an accurate unadjusted OR.

†Estimates were provided as risk ratios and converted to ORs.

table S2). One study was rated as fair quality,<sup>18</sup> and three were rated as poor quality.<sup>13 19 20</sup> Of the four Bradford-Hill criteria for causality deemed relevant to this research, the majority (11 studies) met three criteria (usually strength of evidence, temporality and specificity), 4 studies only met two criteria<sup>6 9 10 19</sup> and 2 met four criteria.<sup>13 14</sup>

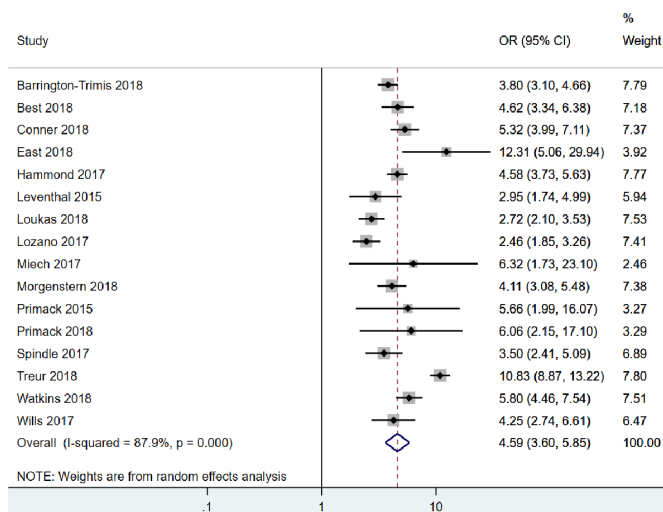
### Results of individual studies

The results of individual studies included in the main meta-analysis can be found in table 1 and within forest plots in figure 2 (unadjusted) and figure 3 (adjusted). Effect sizes (ORs) ranged from 2.46 to 12.31 (unadjusted). All estimates were considered to show strong evidence of a positive association between e-cigarette use among non-smokers and later smoking in unadjusted

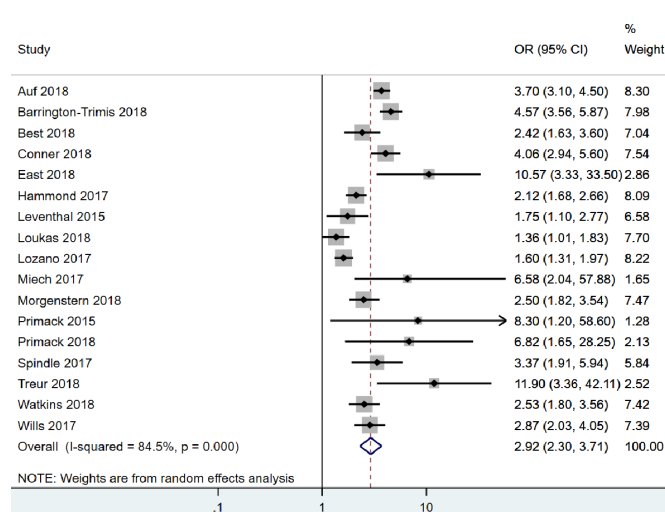
analyses. Covariates included in the adjusted analyses varied on a study-by-study basis. After adjustment, effects in all but three studies<sup>6 9 18</sup> remained strong. The inclusion of covariates in the model attenuated most results (although none were attenuated to the null). Effect sizes were strengthened after adjustment in four studies.<sup>13 15 20 21</sup>

### Synthesis of results

When pooled in a random-effects meta-analysis, e-cigarette use in non-smoking young people was associated with a four-and-a-half-fold increase in the odds of subsequent smoking (unadjusted; OR: 4.59, 95% CI: 3.60 to 5.85). Pooling the adjusted estimates, the association was still strong but somewhat weaker (adjusted; OR: 2.92, 95% CI: 2.30 to 3.71). Heterogeneity



**Figure 2** Forest plot for the unadjusted association between e-cigarette use and subsequent smoking.



**Figure 3** Forest plot for the adjusted association between e-cigarette use and subsequent smoking.



statistics indicated there was high heterogeneity in both the unadjusted ( $I^2=88\%$ ) and adjusted ( $I^2=85\%$ ) analyses.

Forest plots of the analyses subgrouped by varying exposure and outcome levels can be found in the online supplementary figures S1-S4. Of the 16 studies included in the unadjusted meta-analyses, 13 provided results that explored ever e-cigarette use and ever smoking and 3 studies provided results for ever e-cigarette use and current smoking. Three studies explored past 30-day e-cigarette use and ever smoking. Further studies explored: past 30-day use of e-cigarettes and past 30-day smoking (one study), frequency of e-cigarette use (one study) and frequency of smoking (one study). Pooled analyses were not possible for these subgroups.

#### Ever e-cigarette use and ever smoking subgrouping

Pooled analyses of studies exploring ever vaping among never smokers and subsequent ever smoking resulted in a pooled unadjusted OR of 4.17 (95% CI: 3.53 to 6.29). Heterogeneity between included studies in this analysis was high ( $I^2=90\%$ ). The results of the pooled adjusted analysis were similar with slightly lower odds (OR: 3.13, 95% CI: 2.35 to 4.16). Heterogeneity between included studies was still high in the adjusted analysis ( $I^2=84\%$ ).

#### Ever e-cigarette use and current smoking subgrouping

Among never smokers, pooled unadjusted analyses indicated ever e-cigarette users had increased odds of subsequently becoming a current smoker (OR: 4.35, 95% CI: 2.95 to 6.42) compared with never e-cigarette users. Heterogeneity estimates indicated low heterogeneity ( $I^2=41\%$ ). Adjusted analyses showed similar but weakened results when pooled (OR: 2.21, 95% CI: 1.72 to 2.84). Heterogeneity was indicated as low in the adjusted pooled analyses ( $I^2=5\%$ ).

#### Current e-cigarette use and ever smoking subgrouping

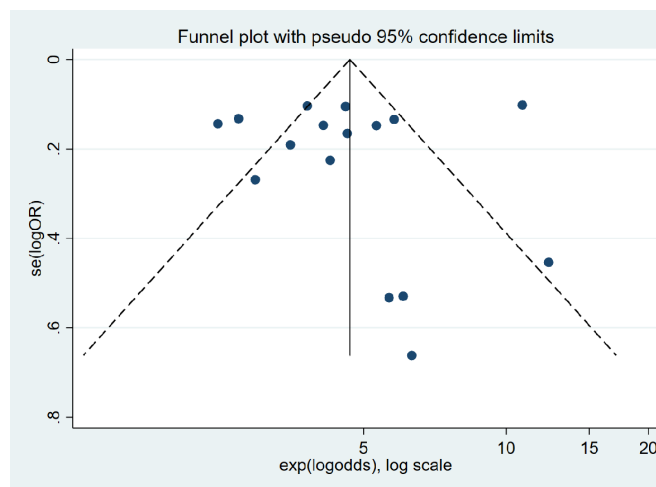
Past 30-day use of e-cigarettes among never smokers was associated with increased odds of ever subsequently smoking (OR: 5.64, 95% CI: 3.75 to 8.50) in pooled unadjusted analysis. Heterogeneity estimates indicated low heterogeneity ( $I^2=49\%$ ). The pooled adjusted analysis also indicated increased odds of ever subsequently smoking (OR: 2.33, 95% CI: 1.84 to 2.96). Heterogeneity estimates also indicated low heterogeneity when the adjusted results were pooled ( $I^2=5\%$ ).

#### Stratification by age

When the unadjusted main analyses were stratified by age (including versus excluding under the age of 18 years) the pooled OR among studies including those under the age of 18 years was slightly higher (OR: 4.87, 95% CI: 3.73 to 6.35) than the pooled OR of studies excluding those under the age of 18 years (OR: 3.17, 95% CI: 2.37 to 4.25). Heterogeneity estimates indicated that there was low heterogeneity between studies excluding those under the age of 18 years ( $I^2=32\%$ ) but high heterogeneity between studies including those under the age of 18 years ( $I^2=88\%$ ). Adjusted pooled analyses are reported in the online supplementary figures S5 and S6.

#### Stratification by study quality/risk of bias

Due to limited variation in quality rating of studies using the NOS, fair and poor quality studies were pooled and compared with good quality studies. The pooled unadjusted OR for studies rated as good quality (n=13 studies; OR: 4.29, 95% CI: 3.67 to 5.01) was lower than the pooled odds ratios for fair/poor



**Figure 4** Funnel plot to assess the risk of bias across studies.

quality studies (n=3 studies; OR: 5.41, 95% CI: 1.67 to 17.51). Heterogeneity measures indicated that high-quality studies were less heterogeneous than fair/poor quality studies ( $I^2=60\%$  and  $I^2=97\%$ , respectively). Adjusted pooled analyses are shown in the online supplementary figures S7 and S8.

#### Stratification by support for the gateway hypothesis

During the review process, it became apparent that many studies did not draw clear conclusions regarding the gateway hypothesis or made balanced conclusions. This made it difficult to categorise studies and as such we were unable to stratify based on this criterion.

#### Stratification by location of study

There were only two countries in which more than one included study was conducted; 10 studies took place in the USA and 3 took place in the UK. The pooled estimate for unadjusted odds of studies conducted in the USA was 3.95 (95% CI: 3.17 to 4.92) and in the UK was 5.55 (95% CI: 3.94 to 7.82). Heterogeneity for studies conducted was high in the USA ( $I^2=93\%$ ) and moderate in the UK ( $I^2=52\%$ ). The other studies were located in the Netherlands, Germany, Canada and Mexico. Pooling these results, the odds of subsequent smoking was 4.75 (95% CI: 2.54 to 8.89) with high heterogeneity between studies ( $I^2=96\%$ ). Adjusted pooled analyses are shown in the online supplementary S9-S11.

#### Risk of bias across studies

The risk of bias across studies is shown in a funnel plot in figure 4. The figure is somewhat asymmetrical and some points (25%) lie above the superimposed funnel limits (95% confidence region) suggesting that there may be some publication bias and indicating there may be heterogeneity (as supported by the  $I^2$  statistics) or selection bias across the included studies.<sup>22</sup>

#### DISCUSSION

Our results indicated that self-reported non-smokers who have used e-cigarettes have four-and-a-half-fold higher odds of subsequently reporting being smokers than those who have not. The pooled adjusted estimate indicated a weaker, although still strong, association with nearly three-fold increased odds of later smoking. Subgrouping and stratification revealed some differences between groups, but all findings indicated a strong

positive association. The main findings were consistent with the findings of Soneji and colleagues,<sup>5</sup> whereby there was a strong positive association between e-cigarette use among non-smokers and subsequent smoking and a high degree of heterogeneity between studies. Similar to Soneji and colleagues,<sup>5</sup> stratification by age revealed slightly lower pooled estimates for the odds of smoking in studies that excluded those under the age of 18 years compared with studies including them. Stratification by location indicated stronger associations in the UK compared with the USA and other countries. We identified an additional 11 studies that were not included in the Soneji meta-analysis. One study that was included in the Soneji and colleagues meta-analysis<sup>5</sup> was not included in this meta-analysis; it was substituted for more recent evidence using an overlapping dataset.<sup>23</sup> In addition, one conference abstract was substituted for the published article.<sup>24</sup>

Three of the four preselected Bradford-Hill criteria (strength of association, temporality and specificity) were commonly rated as having been met in the included studies. Despite the high heterogeneity statistics, the included study estimates are consistently in the same direction and there are plausible causal pathways (eg, nicotine addiction, similar hand-to-mouth actions for both behaviours). This suggests that the results provide some support for a causal relationship between e-cigarette use and later smoking. This is in line with the theory that e-cigarettes act as a gateway to smoking.<sup>3 25</sup> Commonly in the literature, the claim is that the gateway effect is attributable to nicotine addiction.<sup>25</sup> E-cigarettes have historically not delivered nicotine as effectively as cigarettes,<sup>26</sup> so that e-cigarettes may not be adequate to satisfy users who become more heavily addicted to nicotine.<sup>27</sup> In contrast, the common liability theory proposes that people who use multiple drugs (or in this case different delivery methods of the same drug) share the same predisposing factors.<sup>28</sup> When considering a causal relationship between e-cigarette use and later smoking (eg, the gateway hypothesis), these shared factors/confounders (ie, the common liability theory) should be taken into account. Due to a lack of consideration of such factors in the included studies, we have some reservations about inferring a causal relationship. We discuss our reservations below with respect to Bradford-Hill criteria for causality, highlighting the need for additional research that may help to strengthen the evidence for a causal relationship.

The majority of studies included in the meta-analysis satisfied the temporality criterion. All studies except one were longitudinal and measured exposure prior to smoking and smoking at follow-up; therefore, the observed association between earlier e-cigarette use and later smoking is unlikely to be due to reverse causality (ie, smoking leading to e-cigarette use). However, smoking status is sometimes misreported by young people,<sup>29</sup> meaning that some self-reported non-smokers at baseline may in fact have smoked previously. If ever smokers misreport their smoking history at baseline, but they accurately report that they are ever smokers at follow-up, the association could be biased away from the null. Self-reports were validated in one study<sup>30</sup> using breath carbon monoxide levels; however, with the short half-life of breath carbon monoxide (4–6 hours), this measure is not suitable to validate self-reports of ever smoking. In future research, the use of biomarkers that can identify long-term exposure could help researchers to objectively confirm self-reported smoking status at baseline. Differential DNA methylation signals have been observed among smokers compared with non-smokers<sup>31 32</sup> and it is plausible that different signals would be observed among e-cigarette users. Eventually, researchers may be able to use these methylation signatures to exclude people who misreport their behaviour. Consequently, researchers could

more confidently dismiss reverse causation as an explanation for the association.

It is also worth noting that our measure of specificity was relatively liberal. We rated studies as specific if they adjusted for more than basic demographic factors. In a recent cross-sectional study, accounting for shared risk factors fully explained the relationship between e-cigarette use and current smoking, demonstrating the importance of adjusting for potential confounders such as alcohol and drug use, peer smoking and risk-taking behaviour.<sup>33</sup> In addition, some potential confounders, like impulsivity, are difficult to fully capture via self-report and are often assessed relatively crudely. Had we considered only studies adjusting for behavioural risk factors (eg, alcohol and marijuana use) to meet this criterion, only six studies would have been rated as specific. Adjusting for these factors considerably reduced the OR and/or widened the CI compared with the unadjusted analysis. As statistical adjustment can never fully remove the risk of confounding, other approaches to exploring the potential for a common liability (eg, to risk taking) explaining the observed association between e-cigarette use and smoking are warranted. One way of exploring specificity of this relationship more thoroughly (which none of the included studies did) would be the use of negative control outcomes (ie, outcomes that have similar confounding structures to smoking but for which there is no biologically plausible mechanism for e-cigarette use being a causal factor). For example, using an e-cigarette is unlikely to cause other risky behaviours such as the number of sexual partners a person has; if similar associations are seen between e-cigarette use and both smoking and number of sexual partners, it would indicate that the link may be caused by common underlying factors. Furthermore, exploring the genetic aetiology of e-cigarette use may help in understanding whether e-cigarette use and smoking share a common liability. If e-cigarette use has a shared genetic aetiology with negative control outcomes for which there are no plausible pathways through which e-cigarette use would be a causal factor (eg, gambling), this would suggest that the association is due to the two behaviours sharing a common genetic liability. The triangulation of evidence obtained using different methods will be critical here.<sup>34</sup>

To meet the final pre-selected Bradford-Hill criterion, dose-response, increased e-cigarette use should lead to greater risk of later smoking. Despite the most likely causal pathway from e-cigarette use to later smoking being via nicotine addiction,<sup>3</sup> only one of the included studies measured and took into account the nicotine content of the e-cigarettes used. This study indicated that both use of nicotine containing e-cigarettes and (to a lesser extent) non-nicotine containing e-cigarettes are strongly associated with later smoking.<sup>13</sup> This suggests that nicotine exposure may be one factor in the association between e-cigarette use and later smoking, but not the sole mechanism. Unfortunately, the study reported analyses based on nicotine versus non-nicotine vaping in which these two groups were not mutually exclusive (ie, individuals would be in both analysis groups if they tried both nicotine containing and nicotine free e-cigarettes). Thus, it is unclear whether there is an association between e-cigarette use among non-smokers and later smoking when users have not been exposed to nicotine. To determine whether there is a nicotine dose-response involved in the association, we would also need to observe the frequency of e-cigarette use prior to smoking. The one study that looked at frequency of use (at four levels) indicated that there may be a dose-response to nicotine when comparing use just one/two times with use weekly/daily.<sup>14</sup> However, the odds of later smoking did not increase linearly with each increased level of frequency of use. However, as nicotine is

metabolised differently on an individual basis, direct measures of nicotine rather than frequency of use may be necessary to determine whether there is a dose–response. Although nicotine may play a causal role in the relationship between e-cigarette use and smoking, without further study of any dose–response relationship (including the study of nicotine content and frequency of e-cigarette use), we cannot confidently infer causality according to Bradford-Hill criteria.

Our heterogeneity statistics of 88% (unadjusted analyses) and 85% (adjusted analyses) indicate that our effect estimates should be interpreted with caution. Although there is no commonly agreed on strict threshold for heterogeneity, as a rough guide, the Cochrane Handbook suggests that  $I^2$  statistics of between 75% and 100% represent considerable heterogeneity.<sup>8</sup> Age contributed to the observed heterogeneity in our meta-analysis—the association was stronger in studies including those under the age of 18 years than studies excluding them. In adolescence, risk-taking is common<sup>35</sup> and decision making for health-risk behaviours is influenced by peers, societal influences and parental monitoring, but these factors are less influential to adults.<sup>36</sup> Such factors are likely to be confounders of the association between e-cigarette use and later smoking, particularly in studies of those under the age of 18 years and should be included as covariates where possible. The results stratified by location also suggested there may be societal influences on the association; the association was stronger among studies based in the UK than those based in the USA. This suggests that country-specific societal factors such as legislation, taxation, social norms and public opinion may be confounding this association such that study results may not be generalisable to other countries.

In conclusion, there is a strong consistent association in observational studies between e-cigarette use among non-smokers and later smoking. However, findings from published studies do not provide clear evidence that this is explained by a gateway effect rather than shared common causes of both e-cigarette use and smoking. This emphasises the need for a scientific forum to discuss the evidence to date and directions for future research. Future research should consider including relevant potential confounders, such as better measures of impulsivity and other measures of propensity to risk taking, and objective measures of smoking status in order to better explore the potential role of e-cigarettes as a gateway to smoking. Studies that explore the genetic underpinnings of these behaviours and use negative control outcomes may also help improve our understanding of the association between e-cigarette use and later smoking. A scoping review, including qualitative evidence, could provide a clearer understanding of the why e-cigarette use is associated with later smoking. Importantly, any recommendations

regarding e-cigarette regulations to limit the burden of future smoking must consider the potential beneficial impact of e-cigarette use on smoking cessation.<sup>37</sup>

**Contributors** JNK, AET and MRM: conceived and designed the study; interpreted the data; guarantors. JNK, SFS and SP: acquired and analysed the data. JNK: wrote the initial draft of the manuscript and all the authors were involved in preparing this manuscript and contributed to the revision of the manuscript. The corresponding author attests that all listed authors meet authorship criteria and that no others meeting the criteria were omitted.

**Funding** JNK, SFS and MRM: members of the UK Centre for Tobacco and Alcohol Studies, a UKCRC Public Health Research: Centre of Excellence. Funding from British Heart Foundation, Cancer Research UK, Economic and Social Research Council, Medical Research Council, and the National Institute for Health Research, under the auspices of the UK Clinical Research Collaboration, is gratefully acknowledged. This work was supported by the Medical Research Centre Integrative Epidemiology Unit at the University of Bristol [grant number MC\_UU\_0011/7]. This study was supported by the NIHR Biomedical Research Centre at University Hospitals Bristol NHS Foundation Trust and the University of Bristol.

**Competing interests** MRM and AET report grants from Pfizer, outside the submitted work.

**Patient consent for publication** Not required.

**Provenance and peer review** Not commissioned; externally peer reviewed.

**Open access** This is an open access article distributed in accordance with the Creative Commons Attribution 4.0 Unported (CC BY 4.0) license, which permits others to copy, redistribute, remix, transform and build upon this work for any purpose, provided the original work is properly cited, a link to the licence is given, and indication of whether changes were made. See: <https://creativecommons.org/licenses/by/4.0/>.

#### ORCID iD

Jasmine N Khouja <http://orcid.org/0000-0002-7944-2981>

#### REFERENCES

- Public Health England. *E-cigarettes: an evidence update*, 2015.
- Hajek P, Phillips-Waller A, Przulj D, *et al*. A randomized trial of e-cigarettes versus Nicotine-Replacement therapy. *N Engl J Med Overseas Ed* 2019;380:629–37.
- Etter J-F. Gateway effects and electronic cigarettes. *Addiction* 2018;113:1776–83.
- Eastwood B, Dockrell MJ, Arnott D, *et al*. Electronic cigarette use in young people in Great Britain 2013–2014. *Public Health* 2015;129:1150–6.
- Soneji S, Barrington-Trimis JL, Wills TA, *et al*. Association between initial use of e-cigarettes and subsequent cigarette smoking among adolescents and young adults. *JAMA Pediatr* 2017;171:788.
- Leventhal AM, Strong DR, Kirkpatrick MG, *et al*. Association of electronic cigarette use with initiation of Combustible tobacco product smoking in early adolescence. *JAMA* 2015;314:700–7.
- Miech R, Patrick ME, O'Malley PM, *et al*. E-cigarette use as a predictor of cigarette smoking: results from a 1-year follow-up of a national sample of 12th grade students. *Tob Control* 2017;26:e106–11.
- Higgins JPT, Green S, Cochrane Collaboration. *Cochrane handbook for systematic reviews of interventions*. Chichester: Wiley-Blackwell, 2008.
- Loukas A, Marti CN, Cooper M, *et al*. Exclusive e-cigarette use predicts cigarette initiation among college students. *Addict Behav* 2018;76:343–7.
- Hammond D, Reid JL, Cole AG, *et al*. Electronic cigarette use and smoking initiation among youth: a longitudinal cohort study. *Can Med Assoc J* 2017;189:E1328–36.
- Spindle TR, Hiler MM, Cooke ME, *et al*. Electronic cigarette use and uptake of cigarette smoking: a longitudinal examination of U.S. college students. *Addict Behav* 2017;67:66–72.
- Watkins SL, Glantz SA, Chaffee BW. Association of Noncigarette tobacco product use with future cigarette smoking among youth in the population assessment of tobacco and health (PATH) study, 2013–2015. *JAMA Pediatr* 2018;172:181–7.
- Treuer JL, Rozema AD, Mathijssen JJP, *et al*. E-cigarette and waterpipe use in two adolescent cohorts: cross-sectional and longitudinal associations with conventional cigarette smoking. *Eur J Epidemiol* 2018;33:323–34.
- Wills TA, Knight R, Sargent JD, *et al*. Longitudinal study of e-cigarette use and onset of cigarette smoking among high school students in Hawaii. *Tob Control* 2017;26:34–9.
- Barrington-Trimis JL, Kong G, Leventhal AM, *et al*. E-Cigarette use and subsequent smoking frequency among adolescents. *Pediatrics* 2018;142:e20180486.
- Best C, Haseen F, Currie D, *et al*. Relationship between trying an electronic cigarette and subsequent cigarette experimentation in Scottish adolescents: a cohort study. *Tob Control* 2018;27:373–8.
- Morgenstern M, Nies A, Goecke M, *et al*. E-Cigarettes and the use of conventional cigarettes. *Dtsch Arztebl Int* 2018;115:243–8.

#### What this paper adds

- ▶ There are concerns that e-cigarettes may cause youth and young adults who have never smoked before to start smoking.
- ▶ A previous meta-analysis of nine studies has shown that there is a positive association between e-cigarette use and later smoking (sometimes referred to as the gateway hypothesis).
- ▶ Our meta-analysis of 17 studies indicates e-cigarette use among non-smokers is associated with later smoking.
- ▶ However, the results do not provide strong evidence of a gateway effect.

- 18 Lozano P, Barrientos-Gutierrez I, Arillo-Santillan E, *et al.* A longitudinal study of electronic cigarette use and onset of conventional cigarette smoking and marijuana use among Mexican adolescents. *Drug Alcohol Depend* 2017;180:427–30.
- 19 Auf R, Trepka MJ, Selim M, *et al.* E-Cigarette use is associated with other tobacco use among US adolescents. *Int J Public Health* 2019;64:125–34.
- 20 Primack BA, Shensa A, Sidani JE, *et al.* Initiation of traditional cigarette smoking after electronic cigarette use among Tobacco-Naïve US young adults. *Am J Med* 2018;131:443.e1–443.e9.
- 21 Primack BA, Soneji S, Stoolmiller M, *et al.* Progression to traditional cigarette smoking after electronic cigarette use among US adolescents and young adults. *JAMA Pediatr* 2015;169:1018–23.
- 22 Sterne JAC, Harbord RM. Funnel plots in meta-analysis. *Stata J* 2004;4:127–41.
- 23 Barrington-Trimis JL, Urman R, Berhane K, *et al.* E-Cigarettes and future cigarette use. *Pediatrics* 2016;138:e20160379.
- 24 Primack BA, Soneji S, Stoolmiller M, *et al.* Initiation of cigarette smoking after electronic cigarette use: a national study of young adults. *J Gen Intern Med* 2015;30:S193–S93.
- 25 Bell K, Keane H. All gates lead to smoking: The 'gateway theory', e-cigarettes and the remaking of nicotine. *Soc Sci Med* 2014;119:45–52.
- 26 Farsalinos KE, Spyrou A, Tsimopoulou K, *et al.* Nicotine absorption from electronic cigarette use: comparison between first and new-generation devices. *Sci Rep* 2014;4:4133.
- 27 Vanyukov MM, Tarter RE, Kirillova GP, *et al.* Common liability to addiction and "gateway hypothesis": Theoretical, empirical and evolutionary perspective. *Drug Alcohol Depend* 2012;123:S3–17.
- 28 Chapman S, Bareham D, Maziak W. The gateway effect of e-cigarettes: reflections on main criticisms. *Nicotine Tob Res* 2019;21:695–8.
- 29 Khouja JN, Munafò MR, Relton CL, *et al.* Investigating the added value of biomarkers compared with self-reported smoking in predicting future e-cigarette use: evidence from a longitudinal UK cohort study. *BMJ* 2019;19006247.
- 30 Conner M, Grogan S, Simms-Ellis R, *et al.* Do electronic cigarettes increase cigarette smoking in UK adolescents? Evidence from a 12-month prospective study. *Tob Control* 2018;27:365–72.
- 31 Lee KWK, Richmond R, Hu P, *et al.* Prenatal exposure to maternal cigarette smoking and DNA methylation: epigenome-wide association in a discovery sample of adolescents and replication in an independent cohort at birth through 17 years of age. *Environ Health Perspect* 2015;123:193–9.
- 32 Zeilinger S, Kühnel B, Klopp N, *et al.* Tobacco smoking leads to extensive genome-wide changes in DNA methylation. *PLoS One* 2013;8:e63812.
- 33 Kim S, Selya AS. The relationship between electronic cigarette use and conventional cigarette smoking is largely attributable to shared risk factors. *Nicotine Tobacco Research* 2019;68.
- 34 Munafò MR, Davey Smith G. Robust research needs many lines of evidence. *Nature* 2018;553:399–401.
- 35 Reyna VF, Farley F. Risk and rationality in adolescent decision making: implications for theory, practice, and public policy. *Psychol Sci Public Interest* 2006;7:1–44.
- 36 Halpern-Felsher B, Baker M, Stitzel S. *Decision-making in adolescents and young adults*, 2016.
- 37 West R, Shahab L, Brown J. Estimating the population impact of e-cigarettes on smoking cessation in England. *Addiction* 2016;111:1118–9.
- 38 East K, Hitchman SC, Bakolis I, *et al.* The association between smoking and electronic cigarette use in a cohort of young people. *J Adolesc Health* 2018;62:539–47.